

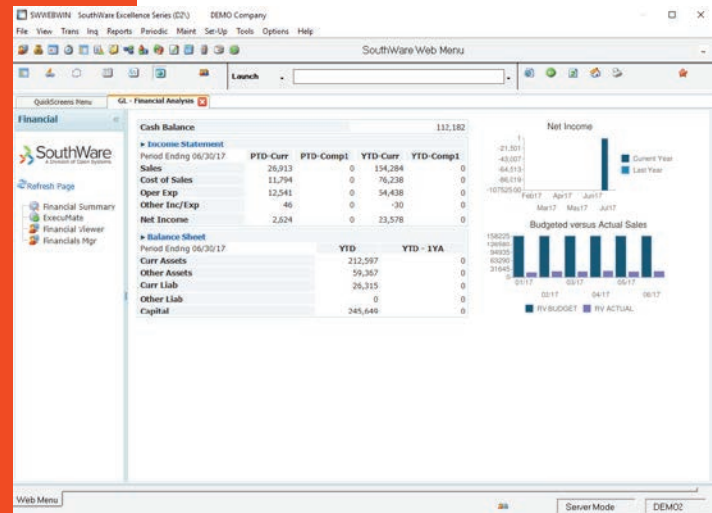
GENERAL LEDGER

Financial Management

Your general ledger is where all your financial information comes together. For up-to-date information, attractive financial reports, and insight behind the reports, supervise your finances daily with SouthWare's General Ledger.

Benefits

- Have instant access to every G/L amount and transaction
- Get financial reports as needed, anytime
- Access to financial reports that provide information in a useful and functional format
- Get today's financial statements, not just last month's
- Easy access to the information auditors request
- Eliminate manual work in G/L as links to other SouthWare products automatically update your financial information
- Compare current year's performance to previous years
- Compare actual performance to the budget
- Quickly update budgets throughout the year as estimates change
- Analyze the performance for different financial reporting entities, as well as for the entire company



General Ledger Financial Analysis Portal

SouthWare's General Ledger gives you daily financial management tools, not just a once-a-month report. Your other SouthWare products keep General Ledger as current as the last transaction. Your financial statements are ready whenever you want to see them, and the answers to why your financial statements got that way are only a keystroke away.

FEATURES & FUNCTIONALITY

FINANCIAL STATEMENT FEATURES

- Income statement
- Balance sheet
- Source/application of funds
- FASB 95 cash flow
- Custom supporting schedules
- Standard reports for easy set up
- Option to customize report layout or columns of information
- Column choices include variances, trends, department, or multi-company comparisons
- Up to 16 columns per report
- Period, quarter, year reporting
- Multi-company consolidation
- Print options include footnotes and output to spreadsheets or word processing

TRANSACTION FEATURES

- “Ledger-look” for easy entry/review
- Interface with other SouthWare products
- Accruals with automatic reversal
- Prior year adjustments that automatically roll the change into the current year
- Memo-type entries for non-financial data

INQUIRY/OTHER REPORTING

- On-screen review of an account and zoom to any source document for a transaction
- Trial balance and transaction history
- Optional interface to cash flow ledger
- ExecuMate II, ExcelReport, ImportMate
- Optional use of spreadsheet interface

The screenshot displays a financial statement viewer window titled 'Financial Statement Viewer: AUTO GEN OF STANDARD REPORTS (1 Type, Selection)'. The window shows a table with columns for 'Description', 'June 2017 PTD Actual', 'June 2017 YTD Actual', 'June 2017 PTD Budget', and 'Ratio'. The data is as follows:

Description	June 2017 PTD Actual	June 2017 YTD Actual	June 2017 PTD Budget	Ratio
Total Sales	\$ 26,913.66	\$ 154,294.90	\$ 189,867.00	100.00%
Total Cost of Goods Sold	\$ 11,794.97	\$ 76,239.16	\$ 81,002.00	42.66%
Gross Profit	\$ 15,118.69	\$ 78,055.74	\$ 108,865.00	57.34%
Total Operating Expenses	\$ 12,541.74	\$ 54,408.00	\$ 17,665.00	9.30%
Net Income from Operations	\$ 2,576.95	\$ 23,647.74	\$ 91,200.00	48.03%
Total Other Revenue	\$ 62.80	\$ 406.66	\$ 0.00	.00%
Total Other Expense	\$ 17.59	\$ 409.34	\$ 0.00	.00%
Net Income (Loss)	\$ 2,622.24	\$ 23,578.06	\$ 91,200.00	48.03%

GL Financial Statements Portal

G/L ACCOUNT FEATURES

- User-defined account number structure - up to 4 parts and 6 digits per part with a maximum of 15 characters including dashes
- Predefined chart option for easy set up
- 12 or 13 accounting periods
- Current, original, and pending budget per period per account
- Comparative amounts for last 5 years
- Budget work file for interactive budget review/change
- Assign accounts to reporting entities